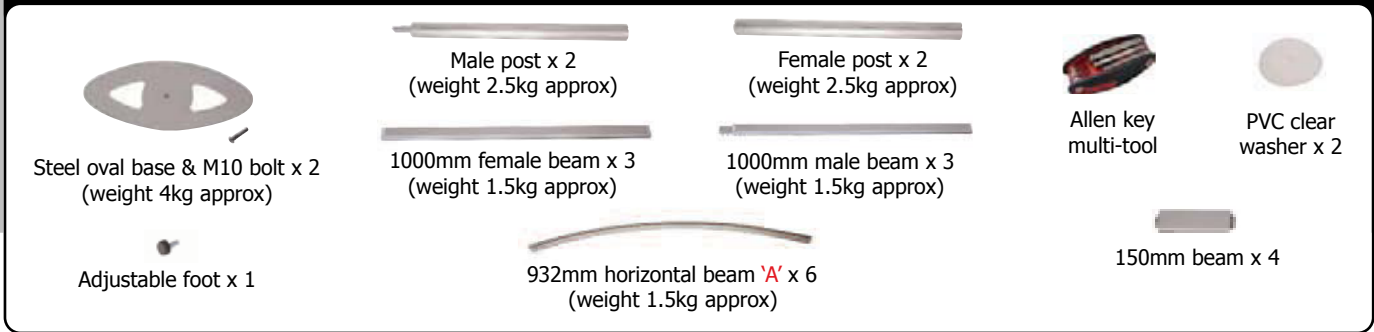
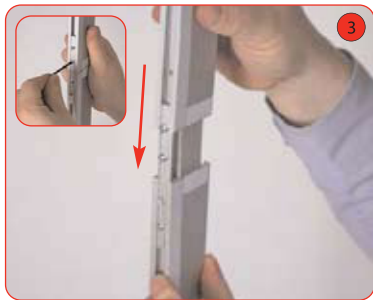


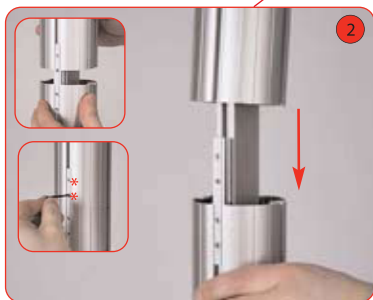
Based on a **double** panel curved kit (quantities may vary) Includes:



Optional light (not supplied with the kit)



Attach 1000mm male beam to 1000mm female beam. Secure grub screws using a 2mm allen key. Repeat step for remaining vertical beams.



Align and slide female post over male post, tighten both grub screws using a 2mm allen key. Repeat step for 2nd post.

Notes:
If applicable, ensure all applied steel tape is facing to the correct side during assembly.



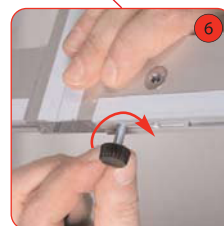
Attach base to male post using M10 bolt and allen key. Ensure clear washer is between base & post. Repeat step for 2nd post.



Attach horizontal beams to the vertical frame sides. Tighten locks using a 5mm allen key. If using rigid infill graphics, slide these in to position before tightening beams.



Attach assembled frame to vertical posts using 4 x 150mm twinspan beams. Tighten locks using a 5mm Allen key.



Attach adjustable foot to bottom horizontal rail. Repeat step for 2nd foot.

E-MAIL: sales@ral-display.co.uk