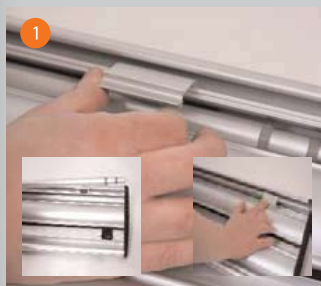
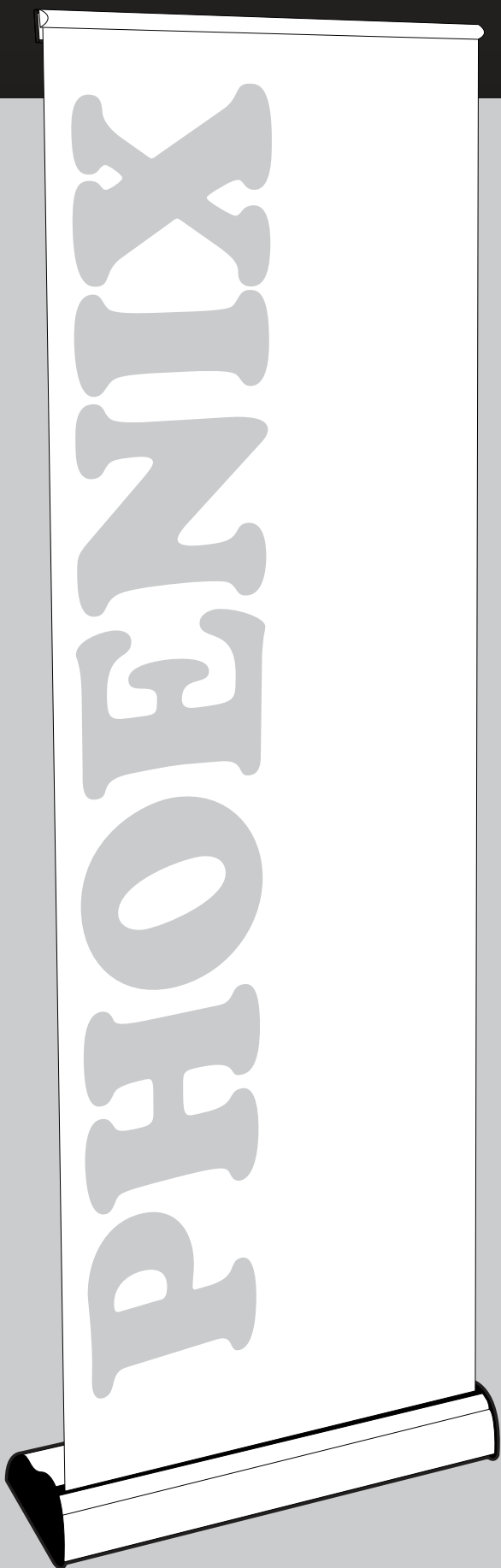
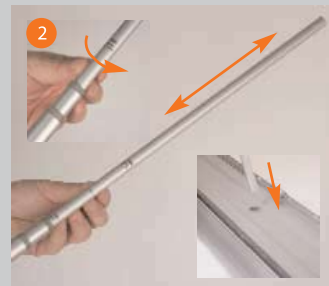


# PHOENIX

## ASSEMBLY INSTRUCTIONS



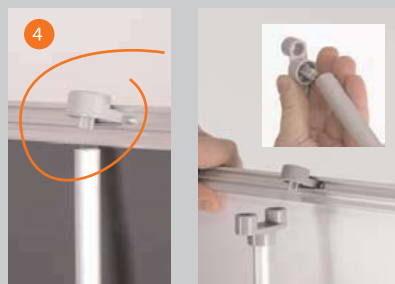
Turn the base over and open the pole retainers. Remove the pole from the base. **Important: Close the pole retainers before using the banner stand.**



Set the telescopic pole to the desired graphic height. **Twist clockwise to lock, anti-clockwise to unlock.** Fit the pole into the base.



Lift the top rail to raise the graphic from the base. Lean the banner stand backwards and continue to extend the graphic. **Important: Hold the top rail whilst lowering each banner to prevent damage to the graphic. (do not drop)**



Secure the graphic into position by locating the top rail onto the pole. For double sided banners place the pole doubler onto the pole. Raise both top rails then secure onto the pole doubler. NB Pole doubler is stored in a pocket inside the carry bag.

web : [www.ral-display.co.uk](http://www.ral-display.co.uk)

e-mail : [sales@ral-display.co.uk](mailto:sales@ral-display.co.uk)

tel : (0116) 2554640

fax : (0116) 2550572

R.A.L Display Marketing Ltd, 2 Cranmer Street, Leicester LE3 0QA