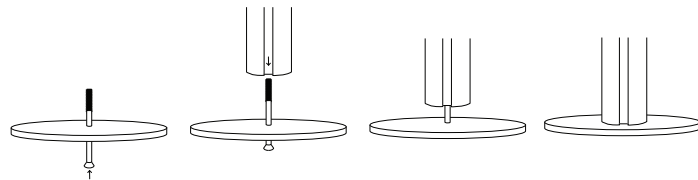


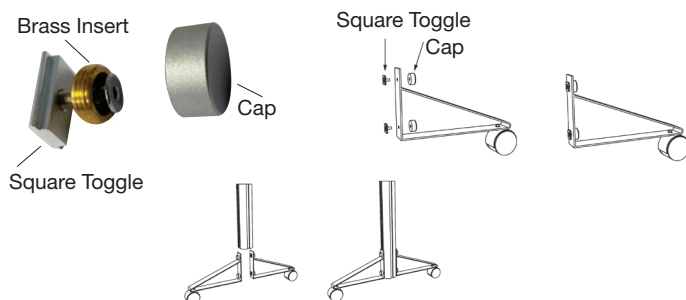
## Free Standing Rod Display Assembly Guide

### Step 1: Frame Assembly



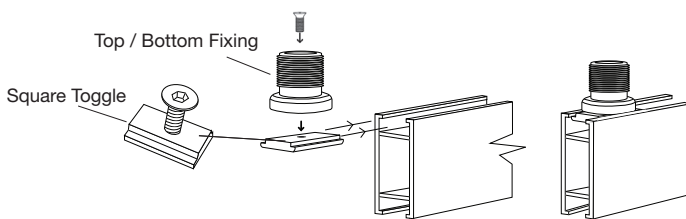
#### Round & Oval Feet

One end of each upright will have a large countersunk screw which should be removed and passed through the countersunk hole in the foot. While inserted through the foot attach to the threaded end of the upright and tighten in position with allen key provided.



#### Castor Feet

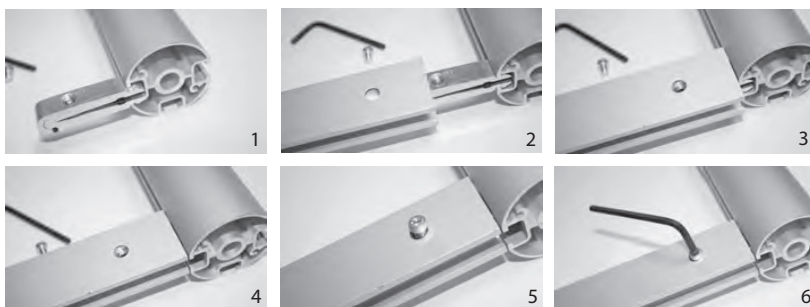
Each castor foot has two mounting holes. Take a toggle and cap for each hole and remove the screw from the toggle and the brass insert from the cap. Slide the brass insert over the screw so the screw head sits in the recessed side. Loosely attach the toggles to the feet through the mounting holes so the toggles are on the outside and slide the foot into the frame channel. Once in the correct position tighten the two screws and finish by adding the silver caps. Repeat this step for the foot on the opposite side of the upright.



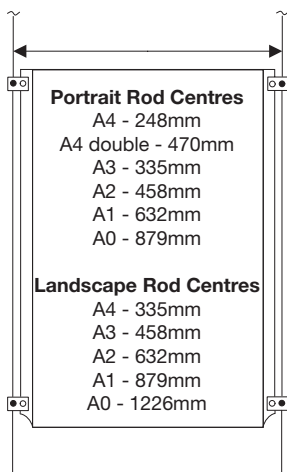
#### Attaching Top & Bottom Rod Fixings To Cross Beams

Remove the cover from the top and bottom brass threaded fixings. These need to be attached to the top and bottom cross rails before assembling the frame. Slide the square toggles into cross beam channels and use the toggle screw to attach the brass fixing to the toggle. These can be correctly positioned once the frame is fully assembled and the rod centres are determined.

#### Fitting cross rails to frame uprights



1. Slide the cross rail insert into top of upright.
  2. Push the cross rail over the insert.
  3. Line up the hole in the cross rail with the hole in the insert.
  4. Slide the cross rail into position flush with top of upright.
  5. Insert screw when aligned.
  6. Using allen key supplied, tighten until you feel resistance (Do not over tighten).
- Repeat the sequence for remaining cross rail.



#### Fitting of Rod To Frame

Frame should now be complete so the next step will be positioning of the rods within the frame. This is determined by the pocket layout you have chosen and width of pockets selected and rod centres required (See guide left for rod centres).

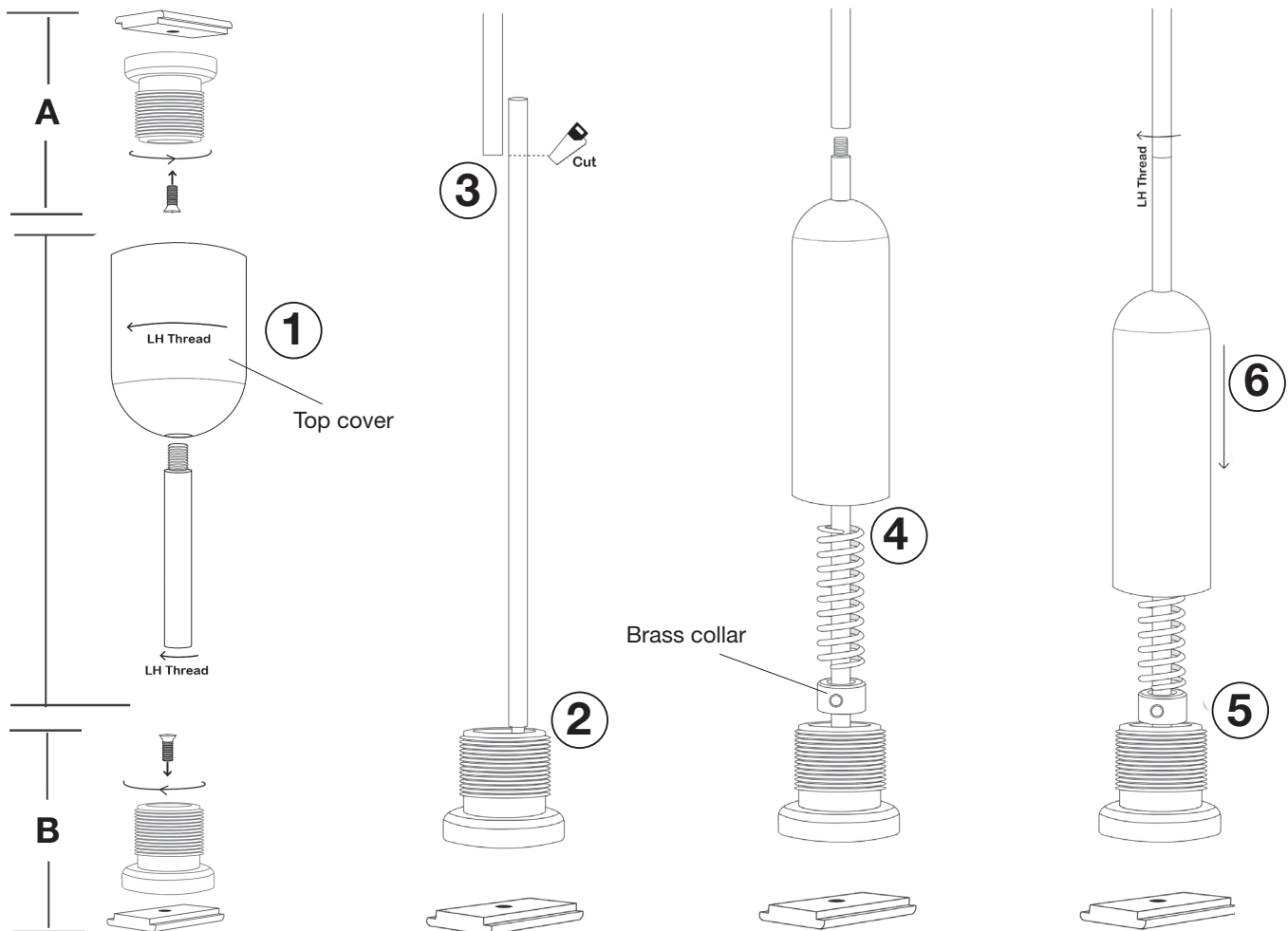
Select your pocket size from the list and mark top and bottom rails with a pencil indicating rod centres and where they need to be attached. Then slide the **top and bottom rod fixings with toggles that were previously fixed to cross rails** in position with your marks and tighten in position with allen key provided.

The next stage will be to fit the rods and pockets to the completed frame. (See following page)

## Step 2: Fitting Rod & Pockets To Frame

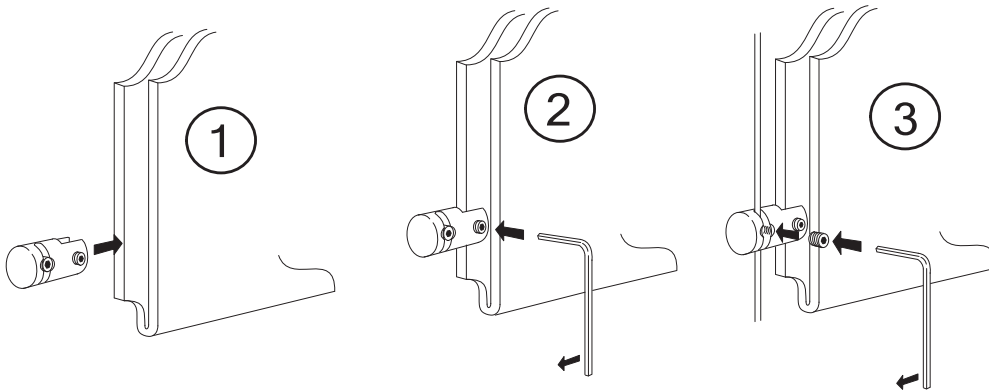
### Fitting of Rod To Completed Frame

At this stage the top and bottom brass threaded fixings and square mounting toggles (A and B) are already fitted to the cross beams and ready to accept the rod.



- ① Ensure the top cover is attached to the top fixing and screw in first rod section. Keep adding rods until you have less than one rod length left.
- ② Cut the last rod so the cut end rests on the top of the brass fixing (important: do not cut the male end). ③ To achieve the correct length turn the rod upside down so the shoulder of the male end rests on the rim of the bottom brass fixing and mark and cut at other end where it meets the hanging rod.
- ④ Place the cut rod into the bottom fixing so the male end is pointing up and slide the small brass collar, the spring and the cover over the rod. Screw the two rods together.
- ⑤ Tighten the collar flush with the top edge of the bottom fixing. ⑥ Screw the cover of the tensioner into the bottom fixing. You should feel an increase in tension as the cover is fully tightened.

### Step 3: Fixing Pockets To Rod



1. Position clamps in the corners of pockets as shown (4 clamps to each pocket\*)
2. Tighten clamp in position on pocket with allen key provided.
3. Determine position on cables for pockets and lock in position with allen key.

\*A0 portrait has 6 clamps