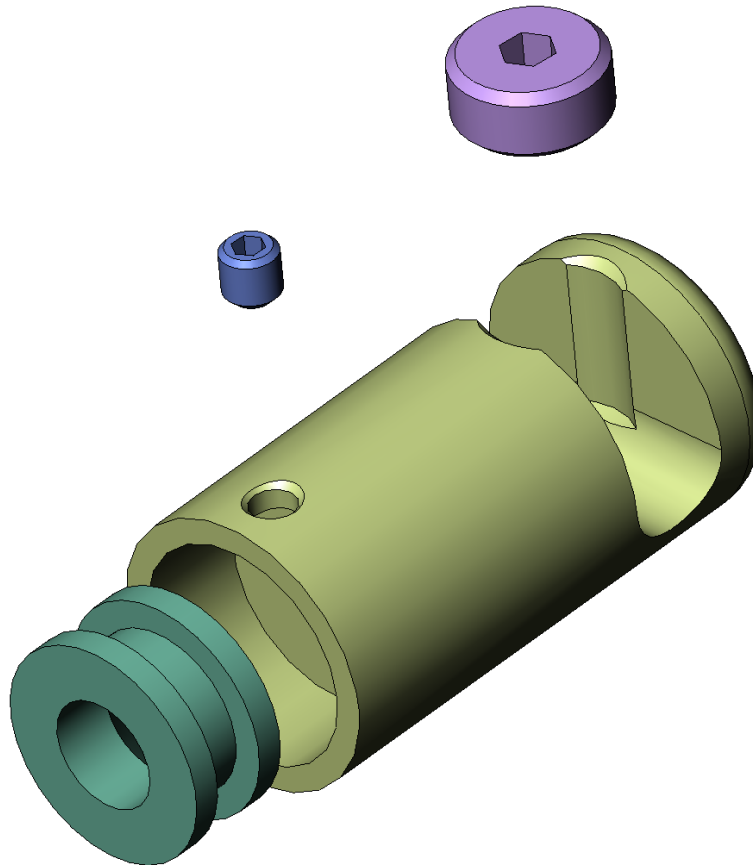


Installation Guide: Wall Support for 6mm Rod



See exploded drawing attached for reference:

- Remove small grub screw from the main barrel (blue on attached) of the fitting- then remove the brass ferrule (shown in teal colour on attached).
- Fix the brass ferrule to the wall using a suitable screw and wall plug if required.
- Place the main barrel (light green) over the top of the brass ferrule and use the small grub screw (blue) to fix into place.
- Place your 6mm rod into the gap at the front of the fitting and use the larger grub screw (purple) to hold it into place.