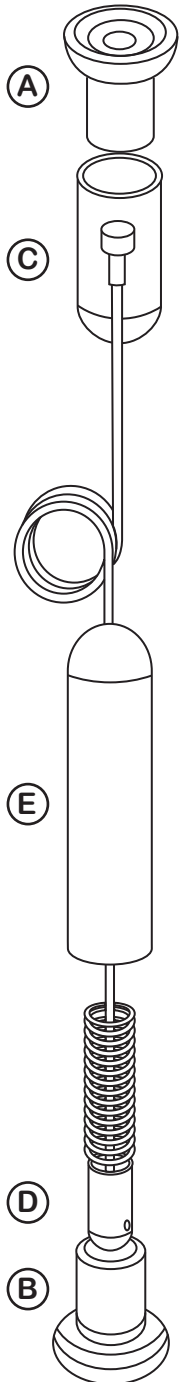


ASSEMBLY INSTRUCTIONS



INSTALLING FLOOR TO CEILING CABLES

Determine the cable centre measurements for the the pockets you are installing from list opposite.

Mark out the floor positions for the pair of cables, use a plumb bob to find the location on the ceiling directly over the floor position.

Unscrew the fixing (A) from the ceiling fixing (C) and securely fix to your mark on the ceiling.

Do the same to the floor with threaded fixing (B) from the cable tensioner.

Hang the cable from the ceiling fixing (C) allowing it slowly to unwind.

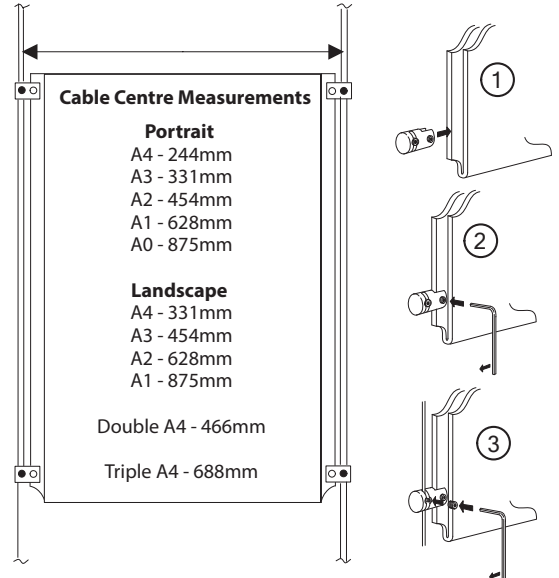
Undo the small brass fitting (D) attached to the cable inside the tensioner (E) with the 1.5mm allen key provided and slide down the cable keeping the cable tight until it is flush with the top of the floor fixing (B) and re-tighten.

Cut off the excess cable so that it is 7mm below the top edge of the floor fixing.

Screw the outer body of the tensioner (E) on to the floor fixing (B)

You should feel the tension starting to be taken up just before the tensioner is screwed fully down. Please note that the cable will pull gently out against the spring when tensioned correctly. If there is no movement the tension is to strong and the brass fitting needs to be moved down the cable slightly to release some of the tension. Repeat the above procedure for your second cable.

Remember, the cable is only as strong as your fixing to the ceiling.



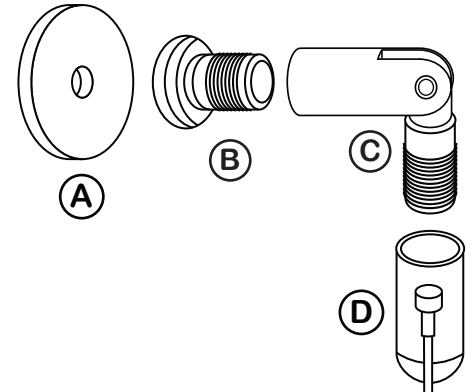
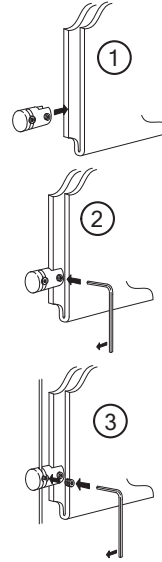
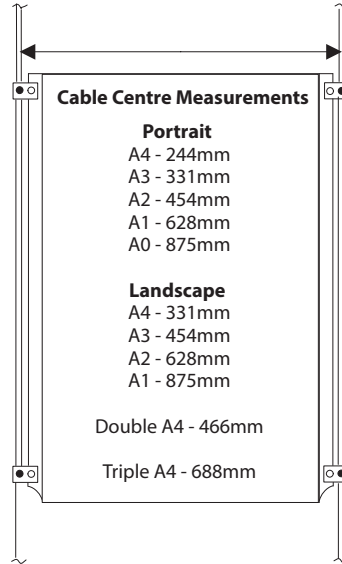
Tel: 0116 2554640 Fax: 0116 2550572

ASSEMBLY INSTRUCTIONS

INSTALLING WALL TO WALL CABLES

Determine the cable centre measurements for the the pockets you are installing from list opposite.

Having marked out the bottom wall positions, use a plumb bob to mark location of top fittings. Marks should be parallel.



Fix circular wall shields (A) and threaded boss (B) in position on the wall, top and bottom.

Screw one elbow (C) to the top fixing and one to the bottom fixing.

Screw top cable fitting (D) to top elbow (C) and carefully unwind cable.

Undo the small brass fitting (F) attached to the cable inside the tensioner (E) with the 1.5mm allen key provided, slide this up the cable and with the cable pulled tight, re-tighten this fitting flush with the top edge of the bottom swivel fitting (C)

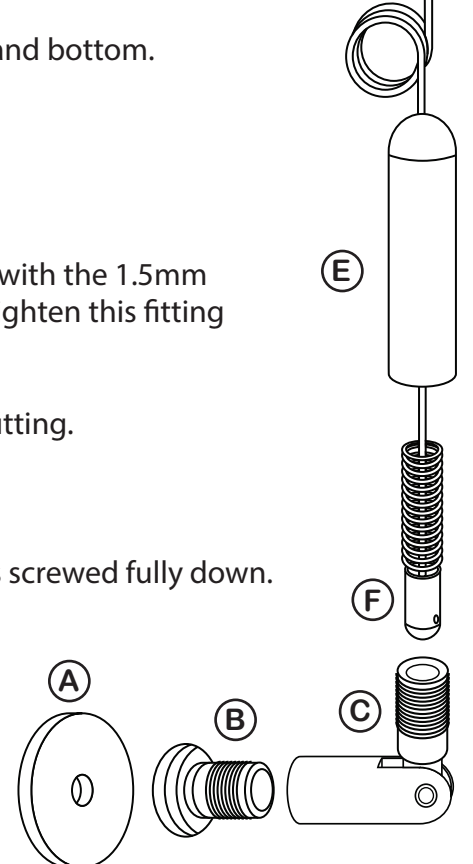
Cut of the cable so that it sits 5mm below the top edge of the bottom swivel fitting.

Screw the outer body of the tensioner (E) on to the bottom wall fixing.

You should feel the tension starting to be taken up just before the tensioner is screwed fully down.

Note: Check that the cable will pull gently out against the spring. If there is no movement the tension is to strong and the brass fitting (F) needs to be moved down the cable.

Remember, the cable is only as strong as your screw fixings in the wall.



Tel: 0116 2554640 Fax: 0116 2550572