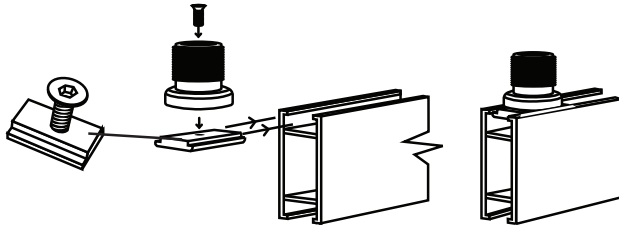


# FOLDING CABLE DISPLAY STAND - ASSEMBLY GUIDE

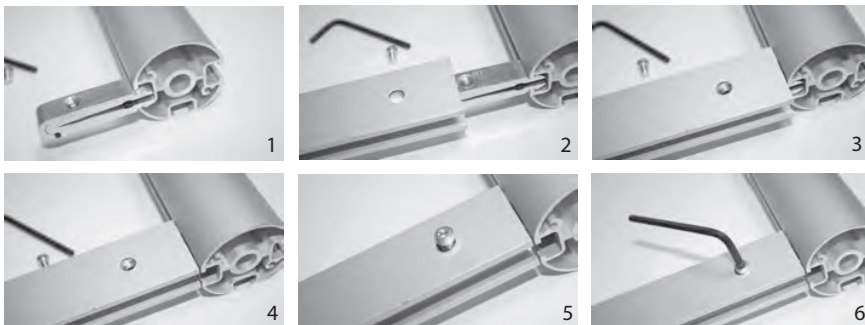
## Assembly of Framework



### Square Toggles

Remove top and bottom connectors from the top and bottom of the cable kits supplied. These need to be pre-assembled with the square toggles provided and slid in to the channels on cross rails. These can be positioned and fixed in place once frame is fully assembled and cable centres are determined.

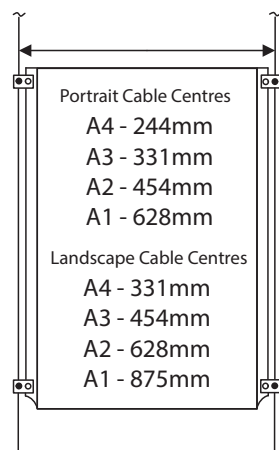
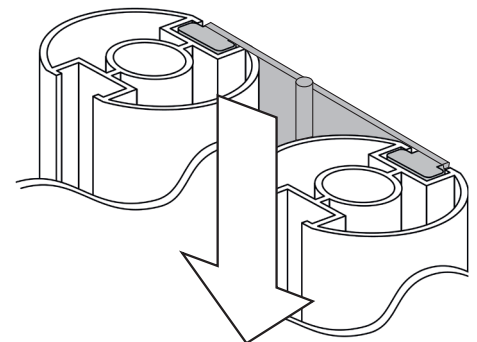
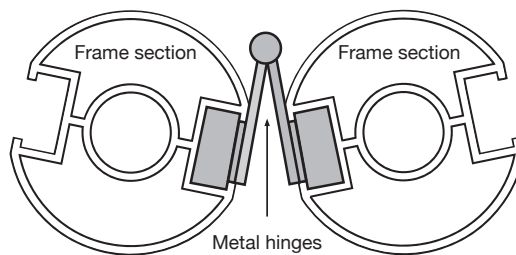
### Fitting cross rails to frame uprights



1. Slide the cross rail insert into top of upright.
  2. Push the cross rail over the insert.
  3. Line up the hole in the cross rail with the hole in the insert.
  4. Slide the cross rail into position flush with top of upright.
  5. Insert screw when aligned.
  6. Using allen key supplied, tighten until you feel resistance (Do not over tighten).
- Repeat the sequence for remaining cross rail.

### Fitting of metal hinges to assembled frame sections

Lay the frames flat on the floor with the uprights next to each other. Loosen the screws in the hinges and slide into the outer channels of the uprights. Position one hinge towards the top and one towards the bottom of the uprights and tighten the screws.



### Fitting of Cables to Frame

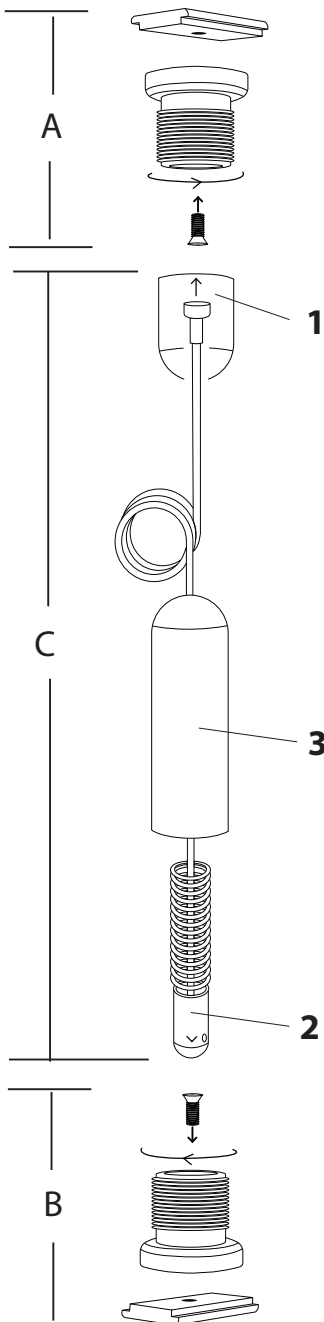
Frame should now be complete so next step will be positioning of the cables within the frame. This is determined by the pocket layout you have chosen and width of pockets selected and cable centres required (See guide left for cable centres).

Select your pocket size from list and mark top and bottom rails with a pencil indicating cable centres and where they need to be attached. Then slide the top and bottom cable fixings with toggles that were previously fixed to cross rails in position with your marks and tighten in position with allen key provided.

The next stage will be to fit cables and poster pockets to the completed frame. (See following page)

# FOLDING CABLE DISPLAY STAND - ASSEMBLY GUIDE

## Fitting Cables & Pockets To Frame



### Fitting of cables to completed frame

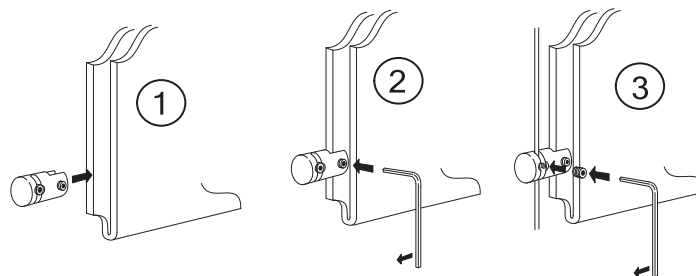
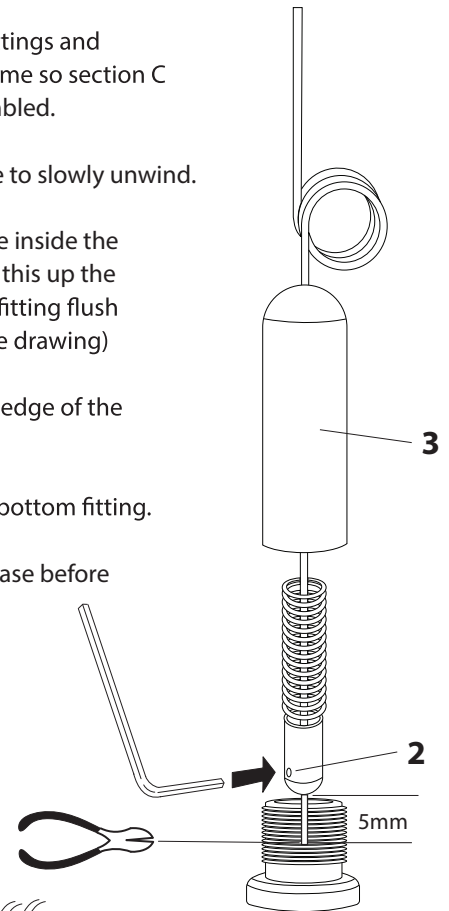
Please note at this stage, sections A & B - threaded fittings and mounting toggles are already fixed in position on frame so section C as indicated is the next part of the cable kit to be assembled.

1. Screw the top fitting **1** to the frame allowing cable to slowly unwind.
2. Undo the small brass fitting **2** attached to the cable inside the tensioner **3** with the 1.5mm allen key provided, slide this up the cable and with the cable pulled tight, re-tighten the fitting flush with the top edge of the bottom threaded fitting (see drawing)
3. Cut off the cable so that it sits 5mm below the top edge of the bottom fitting.
4. Screw the outer body of the tensioner **3** on to the bottom fitting.

You should feel the tension in the cable start to increase before the tensioner is screwed fully down.

### Please Note

Check that the cable will pull gently out against the spring. If there is no movement, the tension is too strong and the brass fitting needs to be moved down the cable.



1. Position clamps in corners of pockets as shown (4 clamps to each pocket)
2. Tighten clamp in position on pocket with allen key provided.
3. Determine position on cables for pockets and lock in position with allen key.