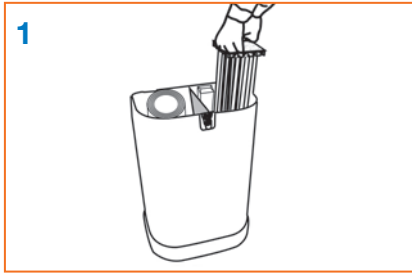
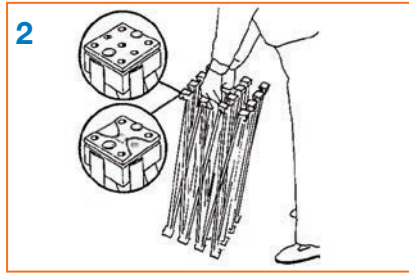


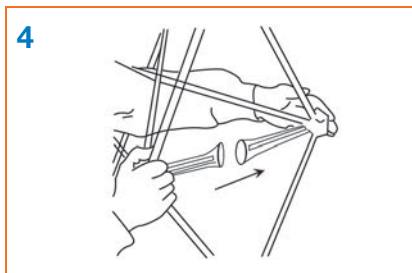
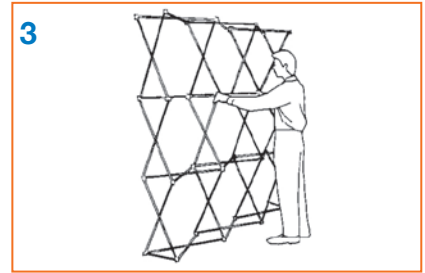
POP-UP: ASSEMBLY INSTRUCTIONS



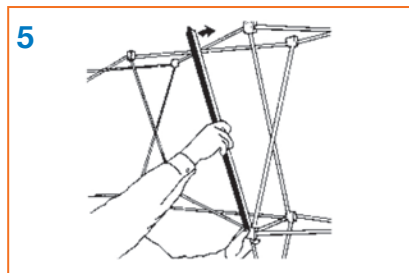
1
 A typical kit may consist of: mag bars, d-end graphics x 2 and front and/ or rear graphics.



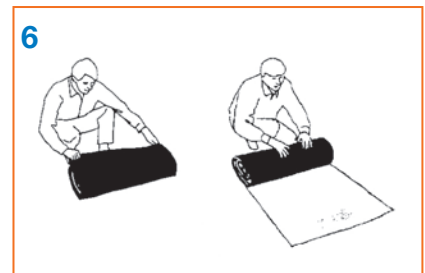
2
 Assemble frame with coloured hookstuds at the top.



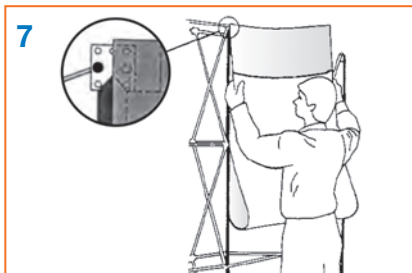
4
 Push the locking bars together until they attach magnetically.



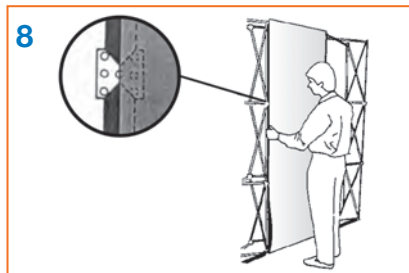
5
 Attach magnetic bars to frame.



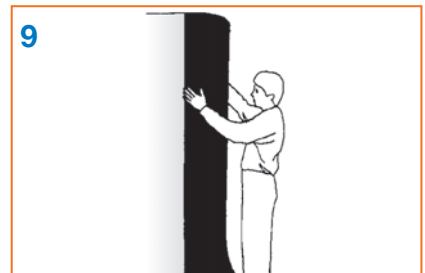
6
 Unroll the graphic panels which are labeled on the rear.



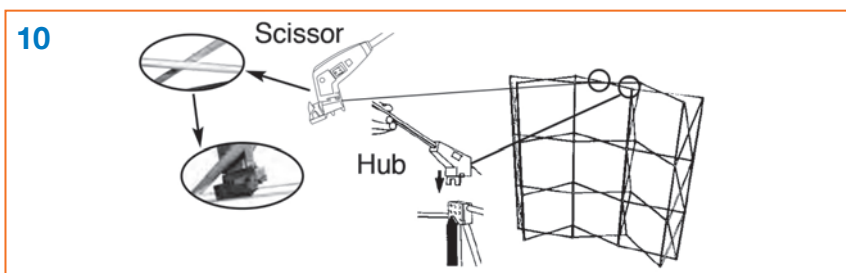
7
 Hook on reverse of panel locates on the coloured stud.



8
 Align panel edges down centre of magnetic bar.



9
 End panels curve from front to back.



10

Scissor

Hub

TV STAND ASSEMBLY INSTRUCTIONS

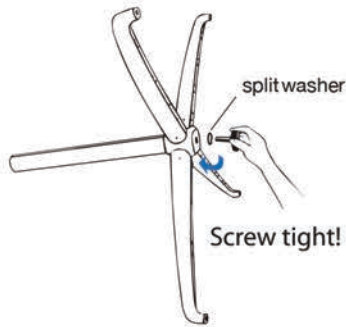
TVs 32" with 200 x 200mm VESA or smaller

Important: use the 225 x 220mm square mounting plate.

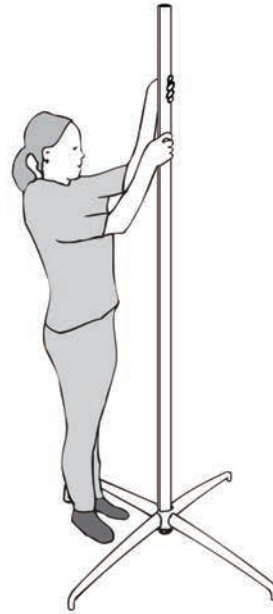
1



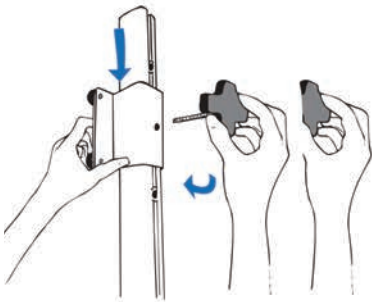
2



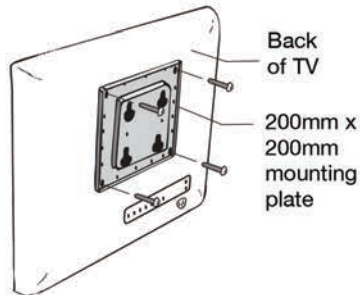
3



4

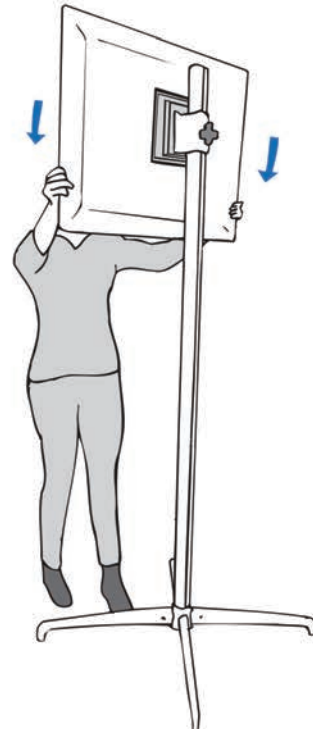


5



Attach mounting plate to TV

6

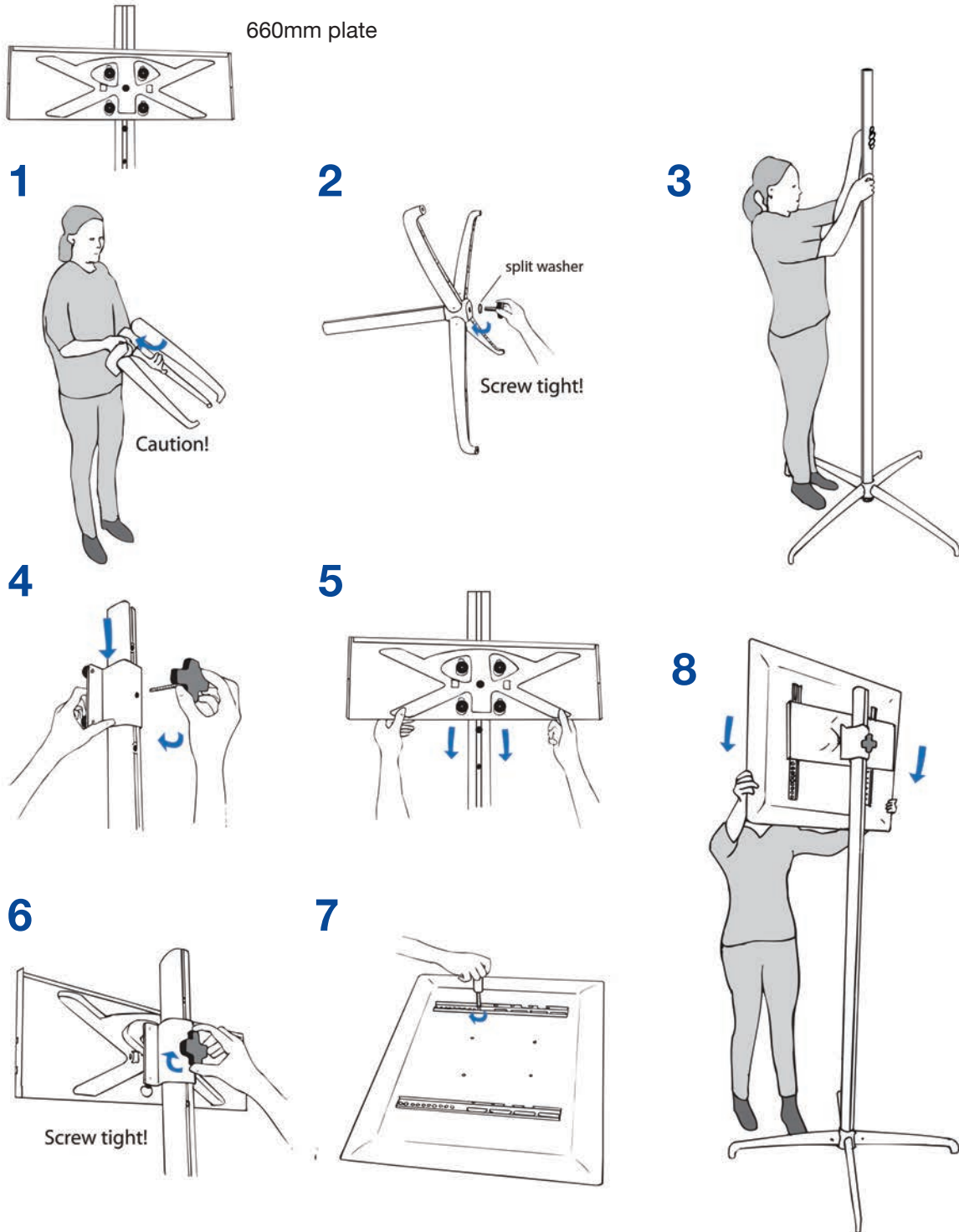


Front of square mounting plate

TV STAND ASSEMBLY INSTRUCTIONS

TV Size from 36" to 50"

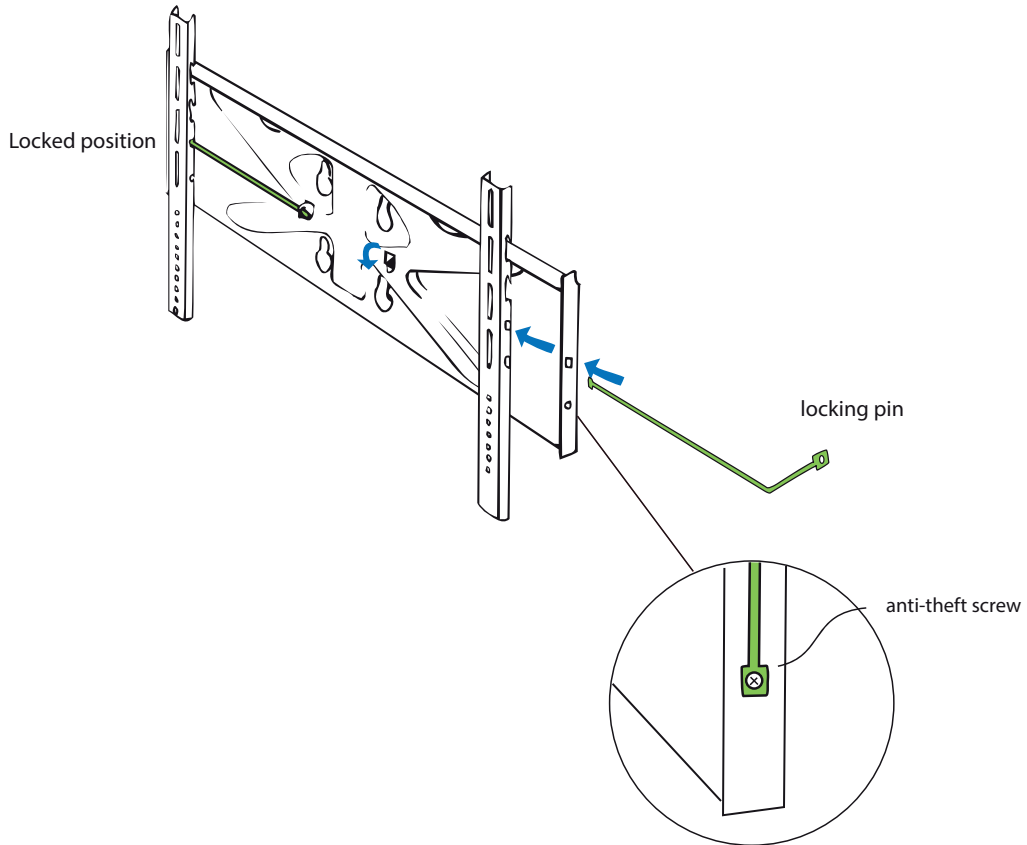
Important: use the 660mm wide mounting plate for TVs between 36" to 50"



TV STAND ASSEMBLY INSTRUCTIONS

TV Size from 36" to 50"

Important: use the 660mm wide mounting plate for TVs between 36" to 50"



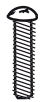
M8 / 20 M6 / 20 M6 / 12 M5 / 20 M5 / 12 M4 / 20 M4 / 12



6x



6x



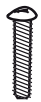
4x



4x



4x



4x



4x



4x



4x



4x



4x



4x



4x